

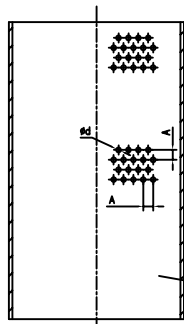
Cast Iron Y-Strainer

STANDARD MATERIALS OF MAIN PARTS

ITEM	PART NAME	MATERIAL
1	Body	Ductile Iron
2	Bonnet	Ductile Iron
3	Screen	SS304
4	Bonnet Gasket	NBR
5	Drain cock	Carbon steel

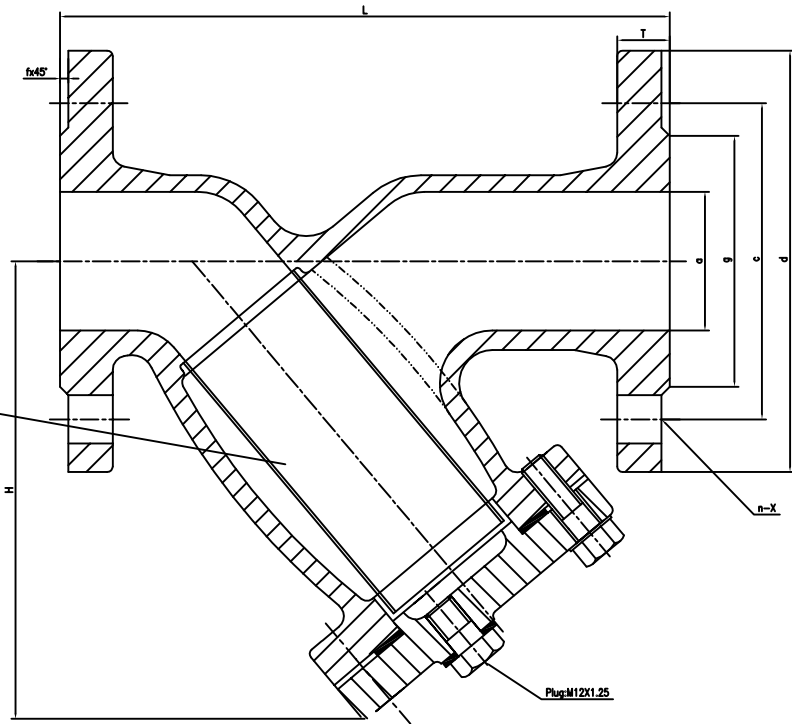
SPECIFICATIONS

Size	DN 25 - 300
Class	PN16
End Flange	BS 4504 / BS EN 1092
Test	BS6755
Design	
Face to Face	DIN3202-F1



Screen

SIZE	A	φd
DN25-150	2.6	1.5
DN200-300	5.0	3.0
DN350-400	7.0	5.0



DIMENSIONS

DN	L	d	c	g	T	f	n-X	≈H	
	DIN3202-F1								
40	200	150	110	84	19	3	4-Ø19	140	
50	230	165	125	99	19	3	4-Ø19	165	
65	290	185	145	118	19	3	4-Ø19	180	
80	310	200	160	132	19	3	8-Ø19	200	
100	350	220	180	156	19	3	8-Ø19	245	
125	400	250	210	184	19	3	8-Ø19	285	
150	480	285	240	211	19	3	8-Ø23	330	
200	600	340	295	266	20	3	12-Ø23	425	
250	730	405	355	319	22	3	12-Ø28	510	
300	850	460	410	370	24.5	4	12-Ø28	575	
350	980	520	470	429	26.5	4	16-Ø28	665	
400	1100	580	525	480	28	4	16-Ø31	740	